

# Health Insurance for People in the Arts?

---

The Arts & Entertainment Plan®  
answers the question.

The Arts & Entertainment Plan®  
is a simple way to assist you in  
managing health care costs for you  
and your family. **Your premiums  
may even be tax deductible.**

---



# We Make Getting Health Insurance Easy

- Automatic online acceptance
- Fast online application process
- Monthly payment options
- Pay-direct option for prescription drug and dental claims
- No medical questionnaires
- Online claim submission

## Plans at a Glance

Choose between:	Standard Plan	Comprehensive Plan
Dental	50% of the covered cost up to \$400/yr (basic & major)	60% of the covered cost up to \$800/yr \$300 basic/ \$500 major (up to \$1,250 Associate Plan)
Prescription Drug	70% up to \$400/yr	70% up to: \$1,000 year 1 \$2,000 year 2 \$3,000 Associate Plan
Extended Health Care	\$5,000 maximum per benefit year	\$7,500 maximum per benefit year
Paramedicals	70% each visit (max \$25/visit)	70% each visit (max \$45/visit)
Vision Care	70% up to \$150 every 2 benefit years	70% up to \$325 every 2 benefit years
Hospital Room	Semi-private room 70% first 5 days, 100% thereafter \$150/day max	Semi-private room 70% first 5 days, 100% thereafter

*This pamphlet does not serve as a contract. It provides an overview of available benefits and reflects the plan as of March 1, 2025, which is subject to change without notice. For further details, including any subsequent changes, visit [aeplan.ca](http://aeplan.ca) or contact AFBS.*





## Other Included Benefits

---

### **Travel Emergency Medical**

You don't expect to have a medical emergency when you travel, whether on vacation or a business trip. But the truth is, it can happen. Our Travel Emergency Medical benefit covers the expenses related to medical emergencies when they occur outside of your home province.

### **Member and Family Assistance Program (MFAP)**

Through the Member and Family Assistance Program, you can receive confidential Counselling Services, Work/Life Services (Financial, Legal), and Health Coaching (Nutritional and Naturopathic Services).

### **Group Term Life and AD&D Insurance**

Life is unpredictable. Have some peace of mind knowing you've got some financial support for you or your family if something were to happen to you.



## Who's Eligible?

---

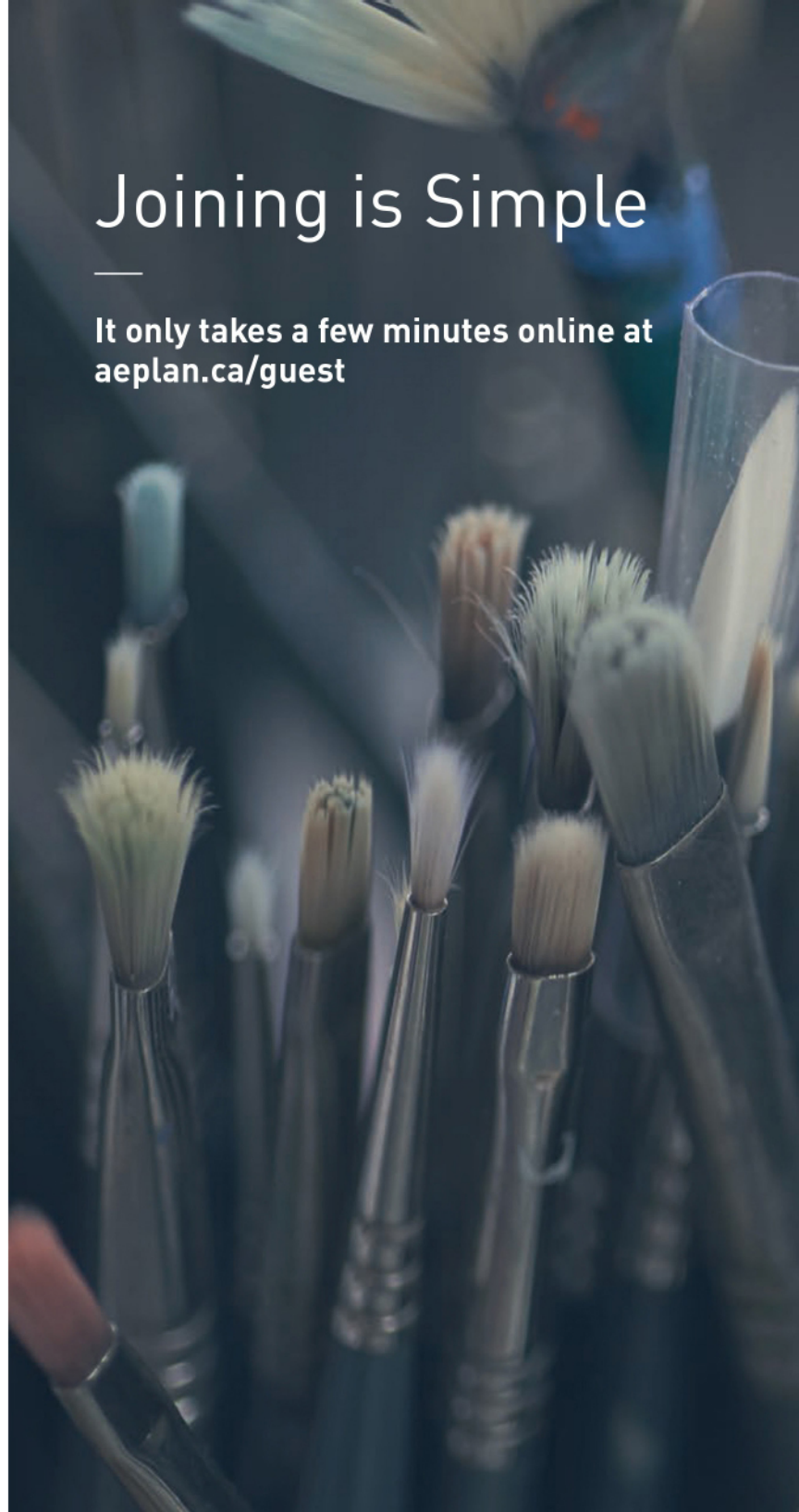
### **You are.**

- If you are a professional in the arts, living in Canada
- If you have a valid Provincial Health Card
- If you're under 71 years of age

## Joining is Simple

---

**It only takes a few minutes online at  
[aeplan.ca/guest](http://aeplan.ca/guest)**



We give you the  
coverage you  
need — minus  
the confusion

---



#### **Prescription Drug Care**



#### **Extended Health Care**

Including semi-private hospital room, vision/paramedical, such as physiotherapy and acupuncture



#### **Dental Care**

Basic and major services



#### **Group Term Life and AD&D Insurance**



#### **Travel Emergency Medical**



#### **Member and Family Assistance Plan (MFAP)**



## Artists Helping Artists

---

**The Arts & Entertainment Plan®** is personal health insurance made exclusively for the Canadian artistic community. Offered by an insurer not driven by profit, the Arts & Entertainment Plan® is available nationwide and is easy to join.

**Who is AFBS?** AFBS is a Member-focused, federally incorporated insurance company not driven by profit that has been operating since 1975. Members of AFBS are primarily members of ACTRA and the Writers Guild of Canada. AFBS has proudly underwritten the Arts & Entertainment Plan® since 2011.



The plan is a service of AFBS, an insurer not driven by profit.

Contact us for  
more information

---

**1.855.934.2355**

[admin@aeplan.ca](mailto:admin@aeplan.ca)

[aeplan.ca](http://aeplan.ca)

